



Spokane Salmon Restoration

COLLABORATIVE

SSRC Progress and Planning

TECHNICAL TEAM MEETING
UPDATES

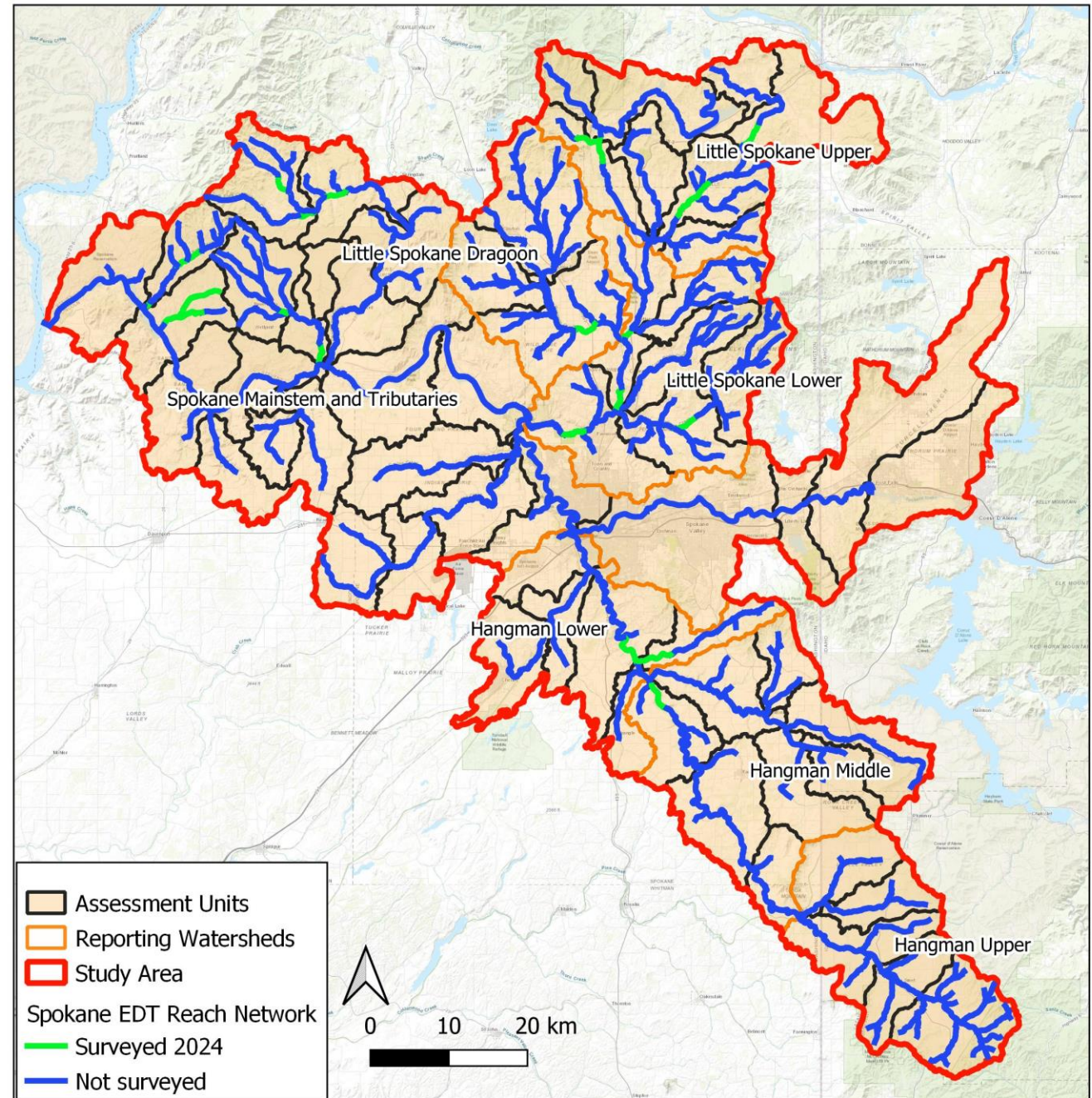
OCTOBER 21, 2024

2024 Data Collection

- ▶ Wrapped up first field season on Sept. 16 this year
- ▶ To date, 27 stream habitat surveys were conducted
 - ▶ ~39 stream kilometers were surveyed from June-September
- ▶ 7 temperature loggers in the Little Spokane and STOI reservation tributaries (additional data from 6 Spokane County loggers)
- ▶ eDNA samples taken at 12 different reaches in the Little Spokane tributaries

2024 Data Collection

- ▶ Did not reach the target for habitat surveys in the first year of data collection
- ▶ Target was 50% of reaches being sampled
- ▶ Working with Cramer to prepare data for input into the EDT model



Slope	<2%				2-4%				4-8%		>8%	Total	
BFW	16+m	8-16m	4-8m	<4m	16+m	8-16m	4-8m	<4m	4-8m	<4m	<4m		
Total Stream Length (km)	176	224	297	306	5	9	55	209	13	131	16	1,441	This shows the 2024 progress (green cells) broken down by slope and bankfull width strata. What remains for 2025 is in red cells.
Total # Reaches	53	72	102	120	3	4	27	93	6	66	16	562	
Stream length to survey (km)	62	69	102	93	3	4	20	72	5	42	6	478	
Reaches to survey	37	42	69	70	3	3	18	64	5	42	10	363	
2024 length surveyed (km)	15.5	6.3	3.4	0.0	0.7	0.0	7.0	4.6	0.6	1.2	0.0	39.2	
2024 Reaches surveyed	7	4	3	0	1	0	7	2	1	2	0	27	
% of target length completed	24.8%	9.1%	3.3%	0.0%	27.4%	0.0%	35.3%	6.4%	11.7%	2.9%	0.0%	8.2%	*Ideally this would have been 50% to complete half in 2024
% selected reaches completed	18.9%	9.5%	4.3%	0.0%	33.3%	0.0%	38.9%	3.1%	20.0%	4.8%	0.0%	7.4%	*Ideally this would have been 50% to complete half in 2024
2025 length remaining (km)	46.8	63.0	98.7	92.9	1.9	4.0	12.8	67.6	4.6	40.9	5.7	438.7	
2025 reaches remaining	30	38	67	70	2	3	11	62	4	40	10	337	*note that 57 reaches can be filled by existing data or remote sensing paired with minimal field data for cross sections and substrate

2024 Data Collection

- ▶ Spokane River Forum Interns
 - ▶ Rose Foundation Grant
- ▶ June-Sept
- ▶ Whitworth, EWU, Eckard



Habitat Surveys- What Did We Learn?

- ▶ Full habitat surveys took longer than anticipated
- ▶ eDNA/Temp logging locations were a bit harder to access than initially thought
 - ▶ To access water from county roads, private land crossing seems necessary often
- ▶ Private land
- ▶ Could have spread out personnel better
- ▶ Already have more data than we used to

Benthic Macroinvertebrate Sampling

- ▶ EWU graduate student helped with benthic collection
 - ▶ 30 sites for benthic collection
 - ▶ Still need to process samples
- ▶ EWU be able to take more samples in 2025

BIA Interns

- ▶ \$50,000 in funding for Tribal Youth staff for 2025 Data Collection Season
 - ▶ 8 staff members aged 16-25
- ▶ Plans to hire them early Spring
 - ▶ Using the same descriptions as the SRF interns

Remote Sensing

CDA Tribe fund is fully set up to start GIS work

Inform the EDT Model

LiDAR data still needs finalization from the state

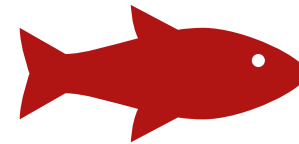
Any day...?

Needs to Improve Efficiency in 2025



Extensive landowner outreach efforts in the offseason months

Letters combined with door knocking has proven to be the best method so far



More crews spread out across watershed

Preparing Our Waters for Salmon



Salmon & People on the Spokane River



That Which Is Hoped For



Sign Up for Updates

Website Launch and Outreach

- ▶ Website – SpokaneSalmon.org
 - ▶ Background and Videos
 - ▶ Meeting Information and Minutes
 - ▶ Updates
- ▶ Presentations:
 - ▶ Commissions and Councils
 - ▶ Stakeholder groups, e.g.– Friends of the Little Spokane
 - ▶ Spokane River Forum Conference

About Us

In February 2024, the Washington State Recreation and Conservation Office (RCO) recognized the Spokane Salmon Restoration Collaborative (SSRC) as the Spokane River watershed lead entity.

Washington State's Salmon Recovery Act, specifically RCW 77.85.050, authorizes the formation of lead entities to develop local watershed strategies, make funding recommendations to the state's Salmon Recovery Funding Board (SRFB), and coordinate funding and implementation of habitat projects.

The SSRC will develop a habitat restoration strategy and recommend funding habitat projects that support reintroduction of non-ESA listed salmon and preservation of native redband trout in the Spokane River watershed. To learn more, visit [About Us](#).



Outreach

- ▶ Potential template for newsletter
- ▶ Design to update landowners and general public who are interested in the lead entity



Spokane Salmon Restoration
COLLABORATIVE

Preparing Our Waters for Salmon



NEWSLETTER **OCTOBER 15, 2024**



HEADLINES ARE ALL CAPS

Don't miss a chance to share major milestones, successes, and big changes happening in your organization. Share a few details and elaborate through a link to your website. Don't miss a chance to share major milestones, successes, and big changes happening in your organization.

Initiating Government Resolutions and WA State Recognition

- ▶ Recognition by the State Feb. 13 2024
 - ▶ Required Resolutions from the 6 initiating governments, per RCW 77.85.050
- ▶ Initiating Governments
 - ▶ City of Spokane
 - ▶ Coeur d'Alene Tribe of Indians
 - ▶ Lincoln County
 - ▶ Spokane County
 - ▶ Spokane Tribe of Indians
 - ▶ Stevens County



2025 Overview

Citizens and Technical Committee Meetings

Continue Outreach

- Private Landowners

Continue Data Collection

- BIA Grant for interns funded 2025

Prepare for EDT run in 2026

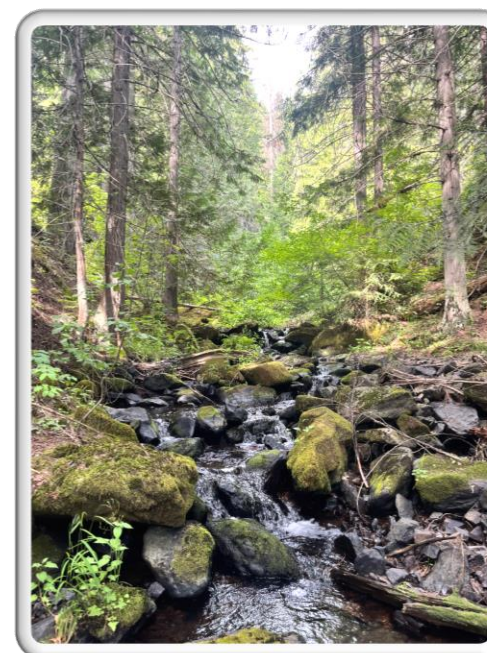
- Perform Limiting Factors Analysis

2026: Habitat Project Solicitation

- ▶ Cannot happen without Restoration Strategy
 - ▶ Will be developed after limiting factors analysis
- ▶ Lead entity must adhere to strict timeline in order to get projects funded by SRFB



Habitat Restoration Strategy



Example Grant Solicitation Award Timeline

Milestone	Date
LOI/RFP Guidelines	December
Notice of Letter of Intent Submitted to SSRC	Jan or Feb
TC Meets to Review/Tier LOIs: SSRC Sends to Sponsors	Feb
SSRC creates Salmon Recovery Portal page in PRISM	Feb
Sponsors receives PRISM contract number	Feb
Sponsor Draft Application in PRISM	April
Presentations and Site Visits with SRFB	April
TC and CC (optional) comments to sponsors posted in PRISM	May
Initial SRFB Review Comments posted in PRISM	May
Sponsor Applications Revised and Posted in PRISM	May
Revised Sponsor Application in PRISM	June
Revised Sponsor Applications Distributed to TC and LC	June
SRFB Final Review Comments and Status	July
TC Ranking Meeting	July
Optional: Sponsors participate in conference call technical reviewers to projects listed as Conditioned, NMI or Project of Concern	
Sponsors with SRFB Conditioned Projects Accept or Decline	August
Final Sponsor Applications Revised in PRISM	
CC Reviews TC Ranked List, Alters as Needed	August
SSRC submits ranked lists via PRISM	August
SRFB Awards Grants	September

Funding Types		
SRFB "General" Funds		
	Acquisition	
	Design Only (Conceptual, Preliminary, Final)	
	Restoration:	
		e.g.-- fish passage, riparian habitat, in-stream floodplain habitat
		Streambank Stabilization
		Phased Projects: Multi-year, multi-partner
Pacific Coastal Salmon Recovery Fund (PCSRF) (NOAA)		
Riparian Program (Dependent on Status of Climate Commitment Act)		

Current and Future Funding

- ▶ 2023-2025 Biennium : \$261,137
- ▶ 2025-2027 Biennium :
 - ▶ Capacity Funding : \$96,200 per year (\$192,400)
 - ▶ Legislative Line-Item Request : \$169,402
 - ▶ 2025 BIA Interns : \$50,000
 - ▶ 2026 Grant Round : Allocation Unknown
 - ▶ January 2027 : '26 Grant Round Habitat Projects Funded

Questions?

